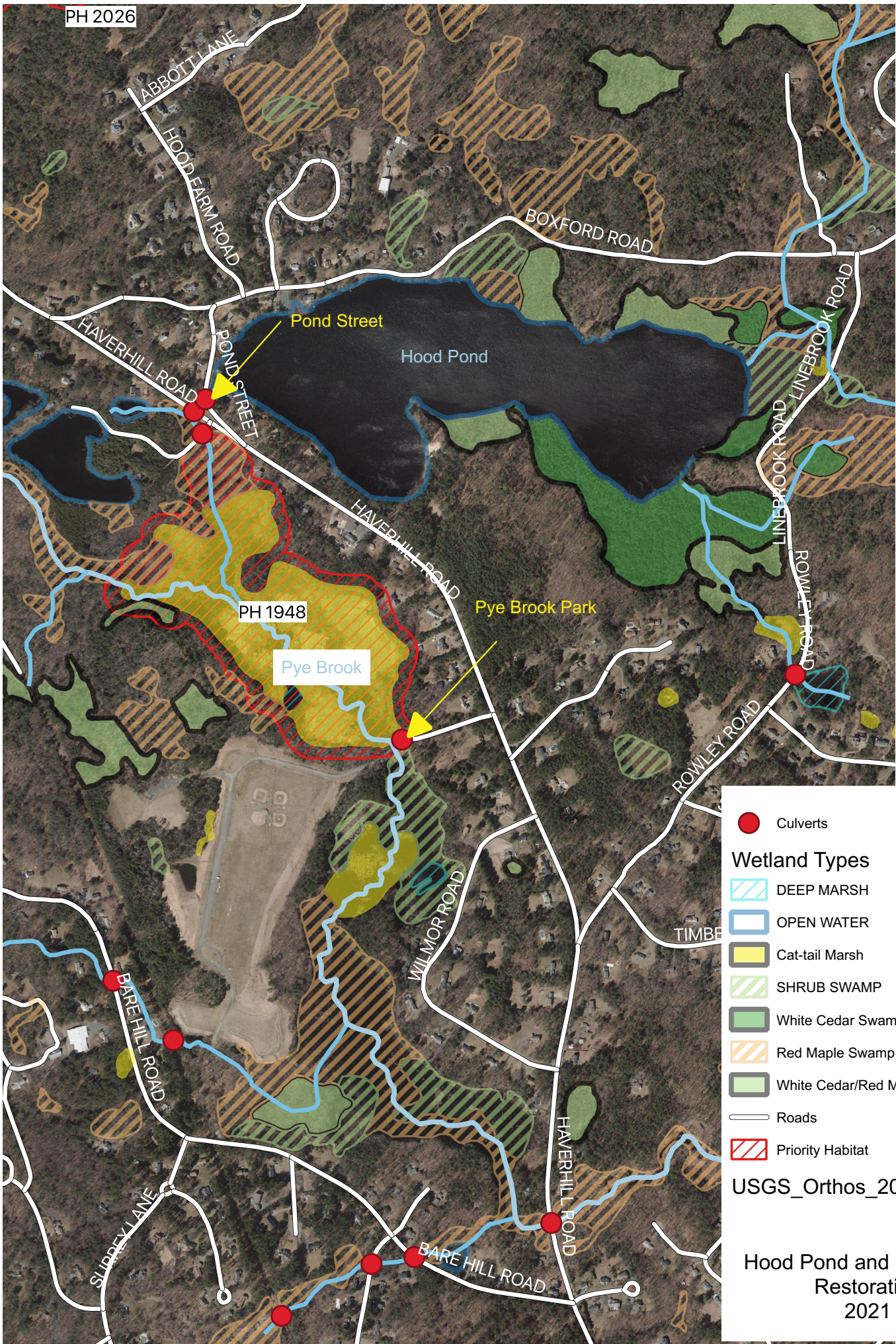


PH 2026



- Culverts
- Wetland Types**
- ▨ DEEP MARSH
- ▭ OPEN WATER
- ▭ Cat-tail Marsh
- ▨ SHRUB SWAMP
- ▭ White Cedar Swamp
- ▨ Red Maple Swamp
- ▨ White Cedar/Red Maple Swamp
- Roads
- ▨ Priority Habitat

USGS_Orthos_2019

Hood Pond and Pye Brook
Restoration
2021